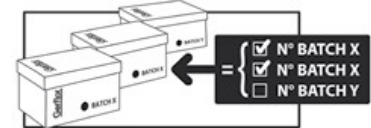
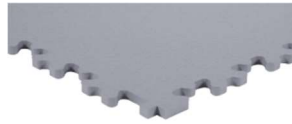


Before laying the floor covering, it should be inspected, so as to detect any visual defects. In the event of any visual defects, please notify GERFLOR and do not start laying the product before receiving GERFLOR's approval.



1. SCOPE OF USE

1.1 Type of premises

Premises routinely submitted to significant static or rolling loads, typically warehouse, workshops and multipurpose industries, within the loads limits defined below.

The premises must be temperature regulated.

1.2 Conditions for use

	R-Tiles		
Tile thickness	5 mm	7 mm	9 mm
Type of Wheeled traffic	Manual pallet truck	Electric pallet truck and forklift	
Max total load	600 kg	1500 kg	3000 kg

Precautions for electric pallet trucks:

Electrically or thermally powered handling machinery is liable to give rise to heating-related damage due to wheel skidding. It is advisable to ensure that equipment is suitable for the floor covering structure (e.g.: machinery equipped with an anti-skid system). Metal wheels are excluded

2. ELIGIBLE SUBSTRATES AND SUBSTRATE PREPARATION

NEW CONCRETE SUBSTRATE	
CONCRETE FLOOR	Surface evenness < 7 mm/2 m and < 2mm/20 cm Moisture content < 85% RH Follow subfloor preparation as described below
RENOVATION*	
CONCRETE FLOOR PAINTED CONCRETE	Surface evenness < 7 mm/2 m and < 2mm/20 cm. Moisture content < 85% RH Follow subfloor preparation as described below
TILES	Surface evenness < 7 mm/2 m Tile joints must be < 4 mm wide and < 1mm deep, and unevenness < 1 mm Otherwise, fill them with a grouting product or levelling compound over the entire surface, so that the grouting joints are not visible
RESIN	Surface evenness < 7 mm/2 m Treatment of cracks < 4 mm ; if > 1 mm, subfloor analysis is necessary Treatment of impacts > 10 mm with the same resin
PVC TILES AND COMPACT ROLLS	If less than 10% is in bad condition, remove the defective tiles and fill the gaps with levelling compound. Otherwise, complete removal is necessary followed by new substrate preparation.
BITIMINOUS / ASPHALT	Surface evenness < 10 mm/2 m, otherwise grind the bump. Static loading < 30 kg/cm ² , otherwise use load distribution plate
CARPET, LVT, PVC FOAM, LAMINATED FLOOR, LINOLEUM, WOOD-BASED PANEL	Complete removal

*If more than 10% of the old covering is in bad condition, complete removal is necessary followed by new substrate preparation.

Concrete floor preparation:

- Physical preparation

- The surfaces should be prepared with care to remove any soiling, laitance, curing products or any other foreign bodies
- The physical procedures must be based on the condition of the surface, the area to be prepared and their location. They include shot-blasting, sanding, grinding, scraping or diamond grit-blasting

- Bump and depression treatment

- Sanding of bumps. Cleaning using industrial vacuum cleaner. Point levelling of depressions with suitable floor sealer

- Crack treatment

- On any surface, cracks should be detected beforehand. No treatment is required if gaps are $< 1\text{mm}$, or if they are flush and $< 4\text{ mm}$ wide. In case of gaps of 1-4mm with unevenness, repair is needed by the structural contractors (grind down step, vacuum clean thoroughly). If gaps are $>4\text{mm}$, inspection, analysis and repair must be done by the structural contractors.

- Joint treatment

- Contraction joints: if they have an opening $< 4\text{ mm}$, they are not treated.
- Expansion joints: following thorough cleaning, expansion joints are preserved. End profiles without an overlay are arranged on either side of the joint.
- Construction joints: where these result in a gap $<1\text{mm}$ wide and there is no unevenness, there is no need for preparation. If the gap is greater than 1mm, they are to be prepared in the same way as for cracks.

- Localised levelling

- Surface levelling may be required, particularly where the surface is not sufficiently even or in poor condition. A levelling compound with specifications meeting the usage requirements should be used. If the substrate moisture content is between 4 and 7%, we recommend the use of outdoor sealers (consult sealer manufacturers).

3. INSTALLATION

3.1. Storage and site requirements

Before laying the floor covering, it should be inspected to detect any visual defects. In the event of any visual defects, please notify GERFLOR and do not start laying the product before receiving GERFLOR's approval.

Since the stores are air-conditioned, these tiles are not subject to temperature deviations greater than $20\text{ }^{\circ}\text{C}$.

Installation should take place at temperatures between $15\text{ }^{\circ}\text{C}$ and $25\text{ }^{\circ}\text{C}$.

Tiles must be stored on-site for 24 to 48 hours beforehand at ambient temperature.



 DO NOT MIX BATCHES

3.2. Installation tools

Cutting: Guillotine, electric jigsaw, or Stanley knife. A heatgun can be used for easier cutting, especially for specific small shapes

Tile interlocking: rubber mallet (Romus Ref. 94964)



3.3. Detailed installation

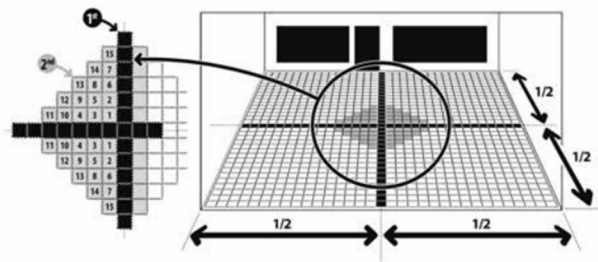
Floor surface reminder: the floor surface must be dry, hard, dust free, load-bearing, flat and free of all grease, dust and silicone.

Use a chalk or laser to mark the lines corresponding to the room axes. Make sure lines are at right angles.

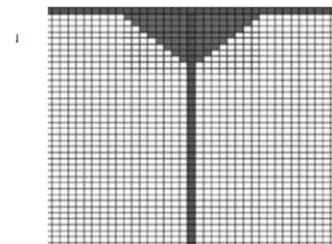
- **Implementation**

The installation of tiles must always be done by working on the two axes that have been drawn beforehand, either along a wall or between crosses in the middle of the room.

General case: start crosswise in the middle of the room. Lay the tiles in a staircase pattern for easier tile interlocking and to prevent displacement. Install the stair tiles $\frac{1}{4}$ by $\frac{1}{4}$ of the room.



Implementation along a wall: start in the middle of the wall. Install the stair tiles on both sides



- **Tile interlocking**

The tiles are interlocked using a rubber mallet. Gently tap the joints together, starting from the corner to the edge.



- **Edge clearance**

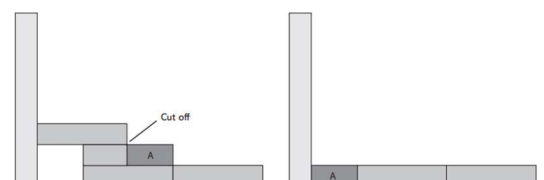
Leave at least 5 mm expansion gap between the tiles and the wall or any fixed point

3.4. Cutting out

Cuts are made preferably with a guillotine or an electric jigsaw.

Overlap cutting method:

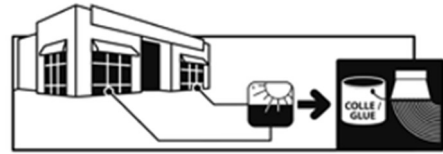
- Position the tile to be cut on the last full laid tile
- Take a complete tile to use as a gauge piece
- Place the gauge piece over the tile to be cut, holding it against the wall. Leave 5mm clearance.
- Mark the tile to be cut all along the edge of the gauge piece
- Cut off the part of the tile to be laid neatly (with a guillotine for example) and then fit it into place.



3.5. Specific situations requiring bonding

3.5.1. Area with direct sunlight

In area with direct sunlight or external heat sources, it is recommended to glue the tiles with 2-part PU glue.



3.5.2. Heavy traffic area

In area with very heavy traffic (turning areas, entrances etc...), we recommend to apply a double-sided adhesive (Fix and Free from Gerflor) before installing the tiles

- **Recommendations for Fix and Free installation**

SUBSTRATE	PRIMER	TYPE OF ADHESIVE
Hydraulic cement Dryness ≤ 4.5 % moisture (CCM)	Grip A700 (BOSTIK) P121 / F78 / Seal Concrete (F BALL) Tec 049 (HB FULLER) Eco Prim T (MAPEI)	Fix&Free 740 (Gerflor)
Hydraulic cement Dryness: Moisture content between 4.5 and 7% (CCM)	F78 (F BALL) EPOXY PE 480 UZIN	Fix&Free 740 (Gerflor)
Tiles	No	Fix&Free 740 (Gerflor)
Resin, old PVC covering	No Stripping is necessary to remove any cleaning product.	Fix&Free 740 (Gerflor)
There are other primers recommended by glue manufacturers.		

If required, apply the primer according to manufacturer's recommendations (refer to technical data sheet)

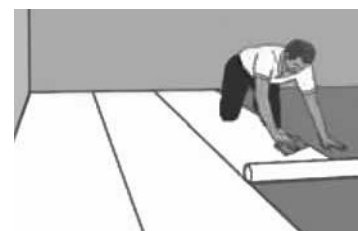
- **Laying double sided adhesive Fix and Free 740:**

Roll out the double-sided adhesive strip, pressing down lightly with a cork pressing block

Caution: The more adhesive (protected) side must never rest on the surface!

Only unroll the amount of double-sided adhesive that can be covered that day with the floor covering.

Roll up the remaining with the protective paper (to protect the surface and the section from dust).



- **Laying PVC Tiles on adhesive**

Draw the lines on the protective paper either with a chalk line or a pencil.

Mark the starting point for the first tiles and the first row of tiles.

Place a steel rule along the line and cut the protective paper only with a straight blade.

Remove the protective paper from the adhesive strip, pulling straight and flat. This straight line then forms the starting point for the first tiles of the first row.

Lay the tiles and interlock them.

Stack the protective papers as you progress and then roll them up (to minimise waste volume).

Remove the protective paper as you progress, pulling straight and flat.

If laying is discontinued, the protective paper may be put back in place to protect the double-sided adhesive.

After laying, roll over the entire surface in a criss-cross pattern.

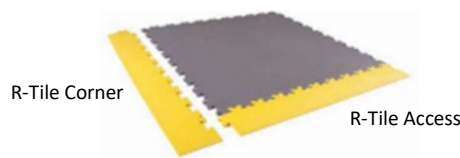
4. Handling special sections

4.1. Stops and doorways

Profiled edges and corners can be installed at installation ends and doorways.

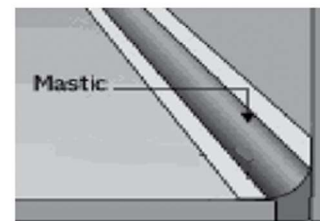
These accessories must be glued with two-component glue and weighted during the setting of the glue (6-12 hours).

R-TILE 5MM ACCESS 67X503 ref 3964
R-TILE 5MM CORNER 67X564 ref 3963
R-TILE 7MM ACCESS 67X503 ref 3961
R-TILE 7MM CORNER 67X564 ref 3959
R-TILE 9MM ACCESS 67X503 ref 3958
R-TILE 9MM CORNER 67X564 ref 3967



4.2. Sealant application in peripheral clearance

We recommend applying a polyurethane or hybrid sealant (M.S. Polymer) in the peripheral clearance to prevent any water or other penetration.



5. REPLACEMENT OF R-TILES

- Replacement of an adhesive-free tile
 - Cut a corner of the damaged tile
 - Disengage the dovetails and remove the tile
 - Fit a new tile in place

- Replacement of an adhesive-bonded tile
 - Cut a corner of the damaged tile
 - Disengage the dovetails and remove the tile
 - Cut and replace the adhesive
 - Fit a new tile in place

6. REPLACING FURNITURE

- Consoles (whether stocked or not) and other display units should be put back in place using distribution plates to prevent slippage of the loose laid material.
- Any damage to the material caused by putting fixtures back into place shall not be accepted by the installer or material manufacturer.